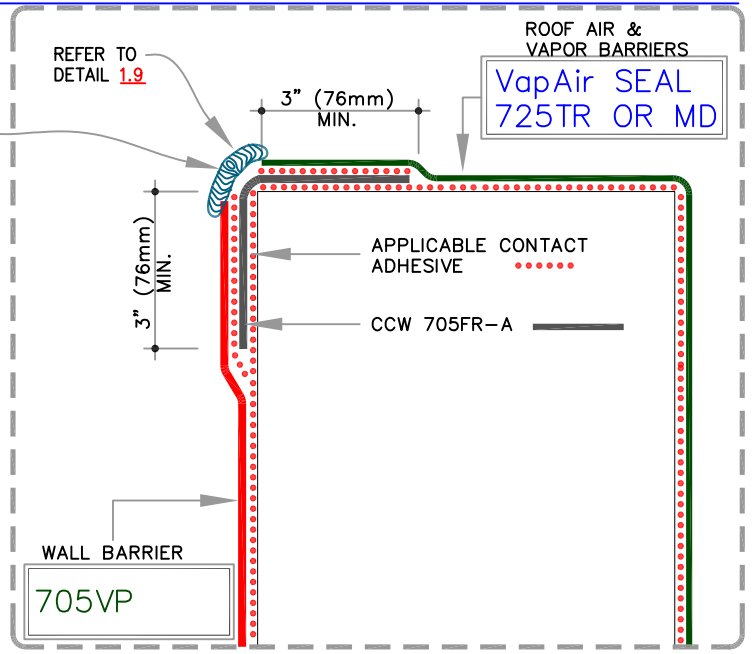


NVELOP TIE-IN DETAILS

DOW 758 SILICONE WEATHER BARRIER SEALANT. TOOLED RIBBON @ 1" (25mm) WIDE AND 40 MILS THICK.

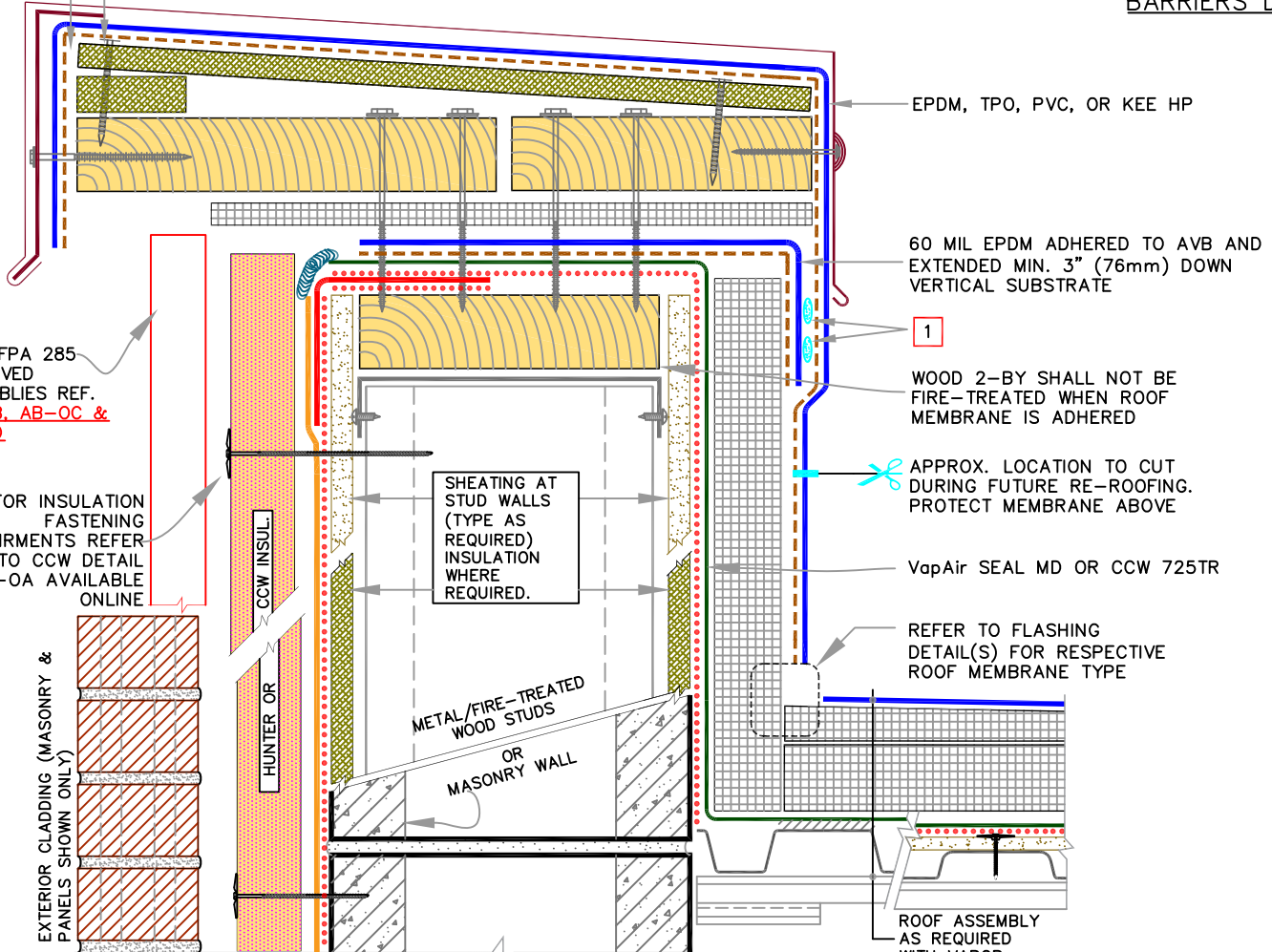
NOTES:

- 1 ****NEEDED ONLY WHEN ROOF MEMBRANE IS PVC OR KEE HP**** APPLY TWO CONTINUOUS BEADS OF UNIVERSAL SINGLE-PLY SEALANT SANDWICHED BETWEEN EPDM FLASHING AND PVC/KEE HP.
- CONTINUOUS BEAD OF UNIVERSAL SINGLE-PLY SEALANT. MIN. 1/2" (13mm) DIAMETER. XXXX



BARRIERS DETAIL

SHEET METAL COPING & WIND CLEAT, SECURED INTO STRUCTURAL MEMBER(S), PER DESIGNER'S REQUIREMENT



FULL CONSTRUCTION DETAIL

	<p>0</p> <p>REFER TO NOTES</p>	<p>ROOF BARRIERS:</p> <p>VapAir SEAL 725TR OR MD</p>	<p>WALL BARRIERS:</p> <p>705VP</p>	<p>4.9</p>
	<p>REFER TO SPECS FOR ADDITIONAL INFORMATION</p>			