

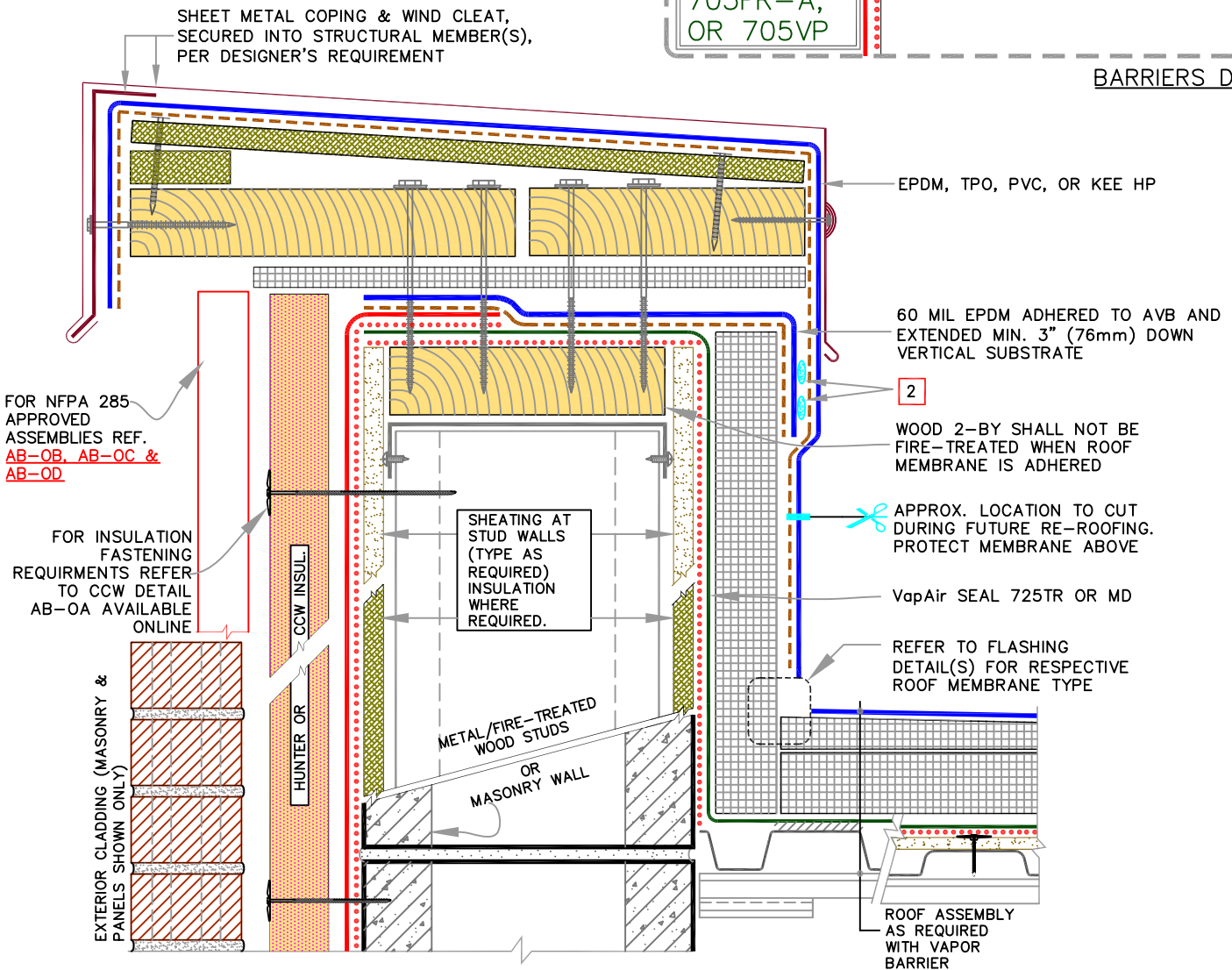
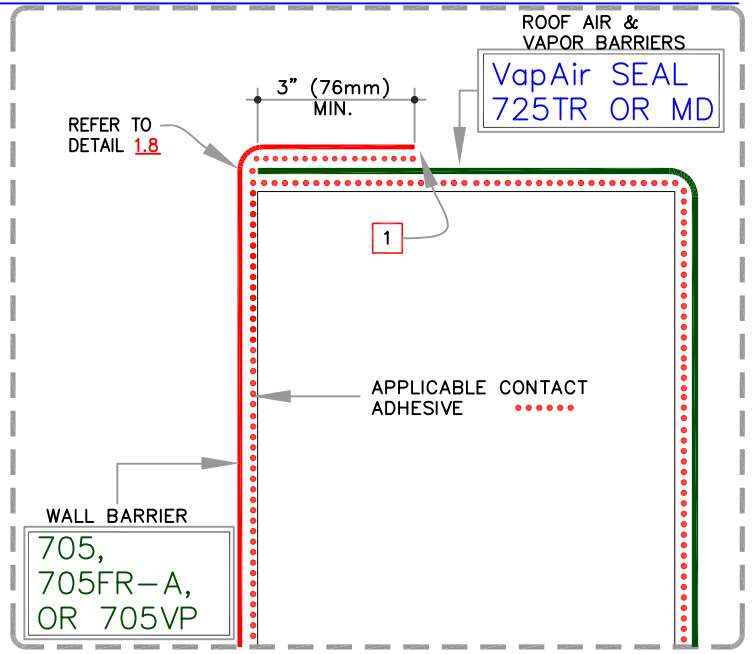
# NVELOP TIE-IN DETAILS

**NOTES:**

**1** IF STEP-OFF OCCURS ON A VERTICAL SURFACE, APPLY A CONTINUOUS BEAD OF SEALANT (SEE CHART BELOW FOR OPTIONS) TOOLED TO 1" (25mm) WIDE BY 40 MILS THICK AT TO PREVENT THE BUCKING OF WATER.

IF	• 705 • 705FR-A	• BarriBond • LM-800XL
IF	• 705VP	• DOW 758 • SILICONE

**2** \*\*NEEDED ONLY WHEN ROOF MEMBRANE IS PVC OR KEE HP\*\* APPLY TWO CONTINUOUS BEADS OF UNIVERSAL SINGLE-PLY SEALANT SANDWICHED BETWEEN EPDM FLASHING AND PVC/KEE HP.



	<p><b>0</b></p> <p>REFER TO NOTES</p>	<p>ROOF BARRIERS:</p> <p>VapAir SEAL 725TR OR MD</p>	<p>WALL BARRIERS:</p> <p>705, 705FR-A OR 705VP</p>	<p>4.8</p>
	<p>REFER TO SPECS FOR ADDITIONAL INFORMATION</p>			