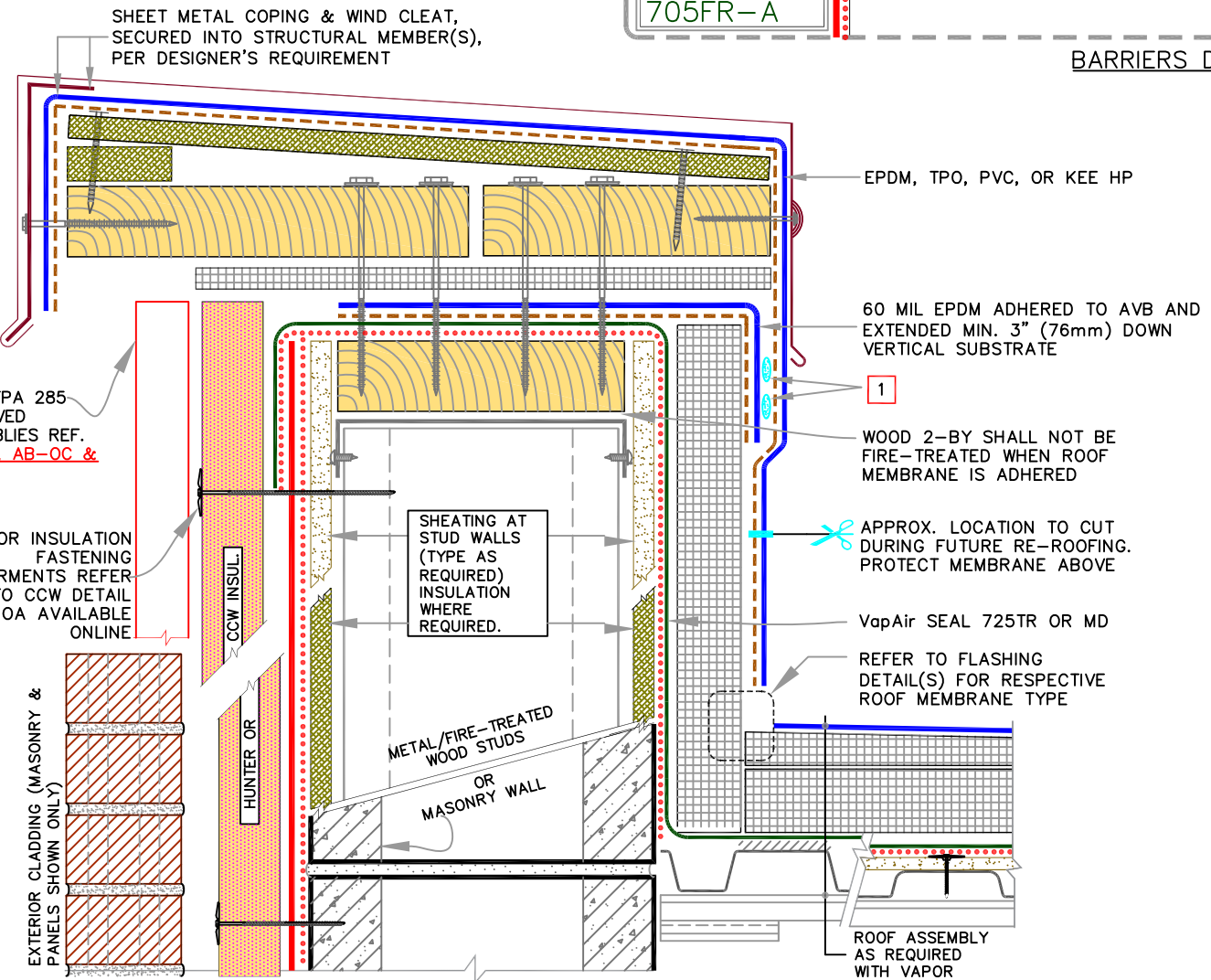
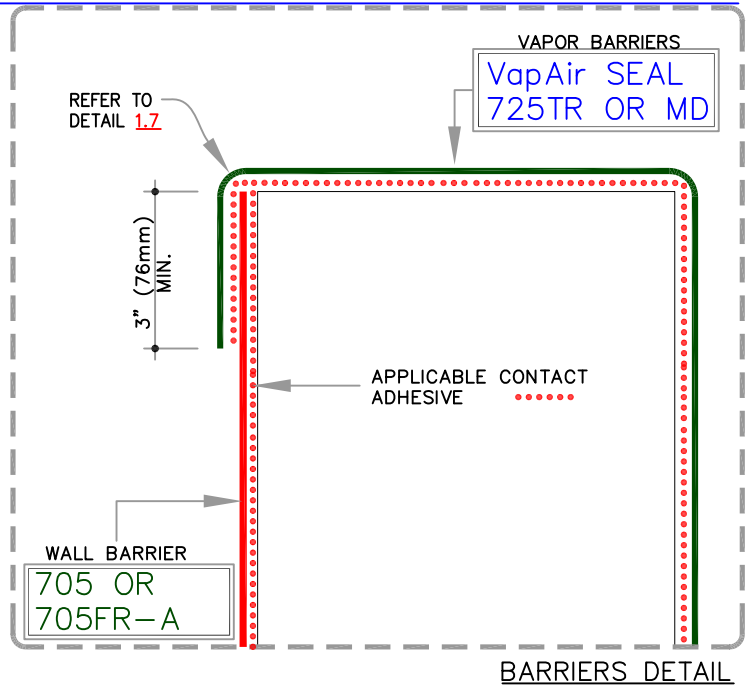



# NVELOP TIE-IN DETAILS

**NOTES:**

- 1 **\*\*NEEDED ONLY WHEN ROOF MEMBRANE IS PVC OR KEE HP\*\*** APPLY TWO CONTINUOUS BEADS OF UNIVERSAL SINGLE-PLY SEALANT SANDWICHED BETWEEN EPDM FLASHING AND PVC/KEE HP.



FULL CONSTRUCTION DETAIL

	<p>0</p> <p>REFER TO NOTES</p>	<p>ROOF BARRIERS:</p> <p>VapAir SEAL 725TR OR MD</p>	<p>WALL BARRIERS:</p> <p>705 OR 705FR-A</p>	<p>4.7</p>
	<p>REFER TO SPECS FOR ADDITIONAL INFORMATION</p>			