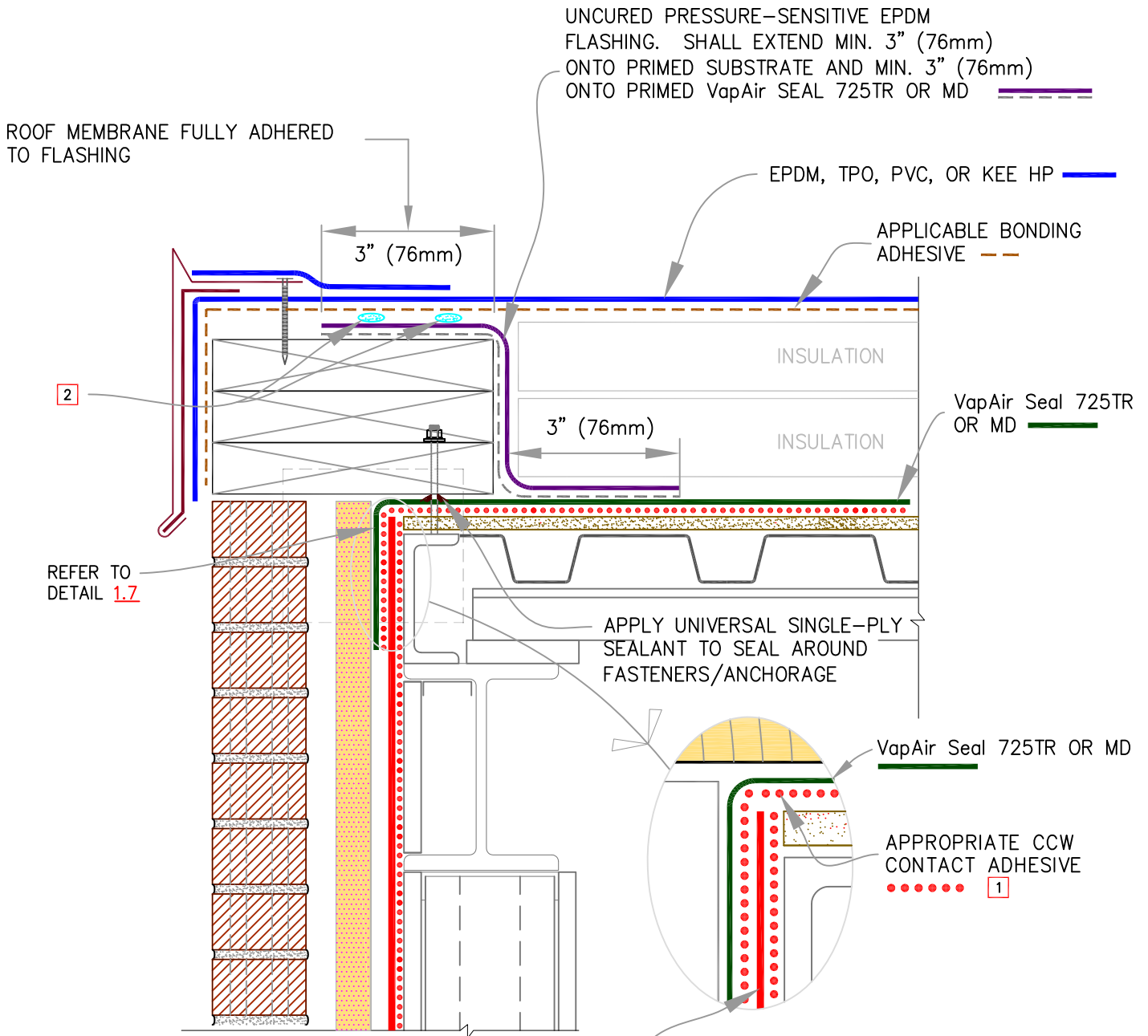


# NVELOP TIE-IN DETAILS



**NOTES:**

<b>1</b> CCW CONTACT ADHESIVE OPTIONS	
• 702**	• 715**
• 702 WB	• CAV-GRIP
• 702 LV**	• TRAVEL-TACK
**NOT FOR USE WITH 705VP	

CCW AIR BARRIER. OVERLAP SHALL BE A MIN. 3" (76mm). SEE MATERIAL COMPATIBILITY DETAILS 1.7 THROUGH 1.11 FOR APPROPRIATE PRODUCT TIE-IN.

**2** \*\*NEEDED ONLY WHEN ROOF MEMBRANE IS PVC OR KEE HP\*\* APPLY TWO CONTINUOUS BEADS OF UNIVERSAL SINGLE-PLY SEALANT SANDWICHED BETWEEN UNCURED EPDM FLASHING AND PVC/KEE HP.

	<b>0</b> REFER TO NOTES	ROOF BARRIERS:	WALL BARRIERS:	4.15
		VapAir SEAL 725TR OR MD	ALL CCW AIR BARRIERS	
REFER TO SPECS FOR ADDITIONAL INFORMATION				