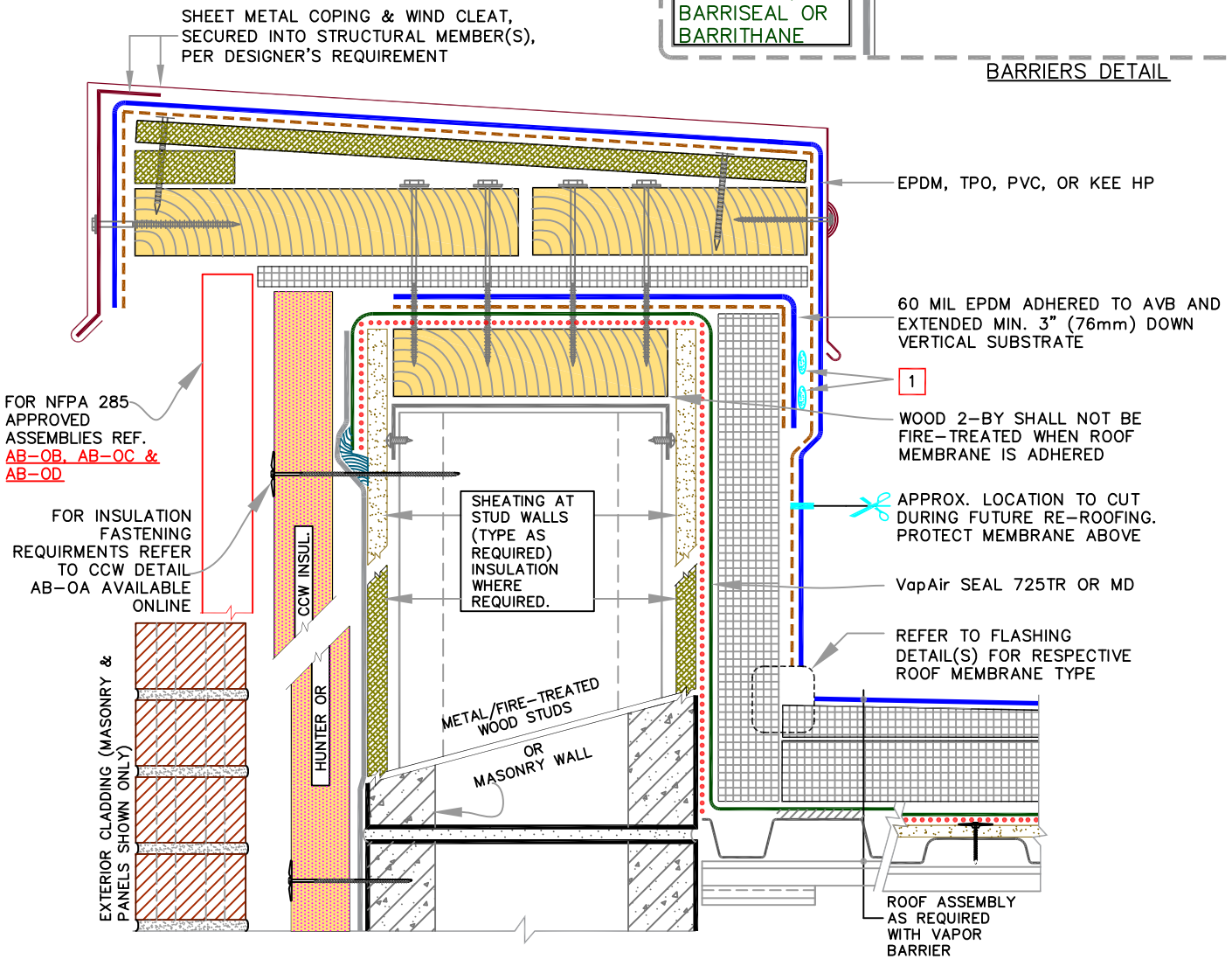
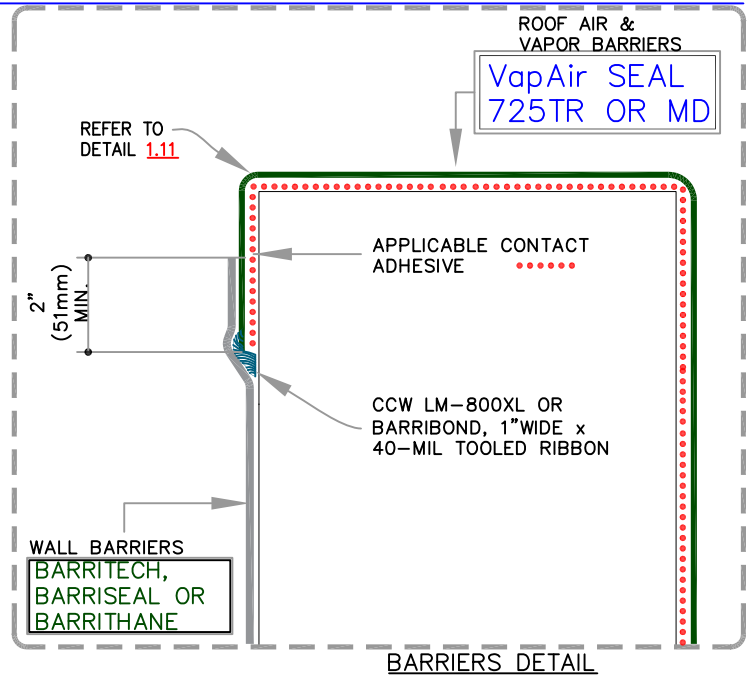


# NVELOP TIE-IN DETAILS

**NOTES:**

- 1 **\*\*NEEDED ONLY WHEN ROOF MEMBRANE IS PVC OR KEE HP\*\*** APPLY TWO CONTINUOUS BEADS OF UNIVERSAL SINGLE-PLY SEALANT SANDWICHED BETWEEN EPDM FLASHING AND PVC/KEE HP.



	0	ROOF BARRIERS:	WALL BARRIERS:	4.11
	REFER TO NOTES	VapAir SEAL 725TR OR MD	BARRITECH, BARRISEAL OR BARRITHANE	
REFER TO SPECS FOR ADDITIONAL INFORMATION				