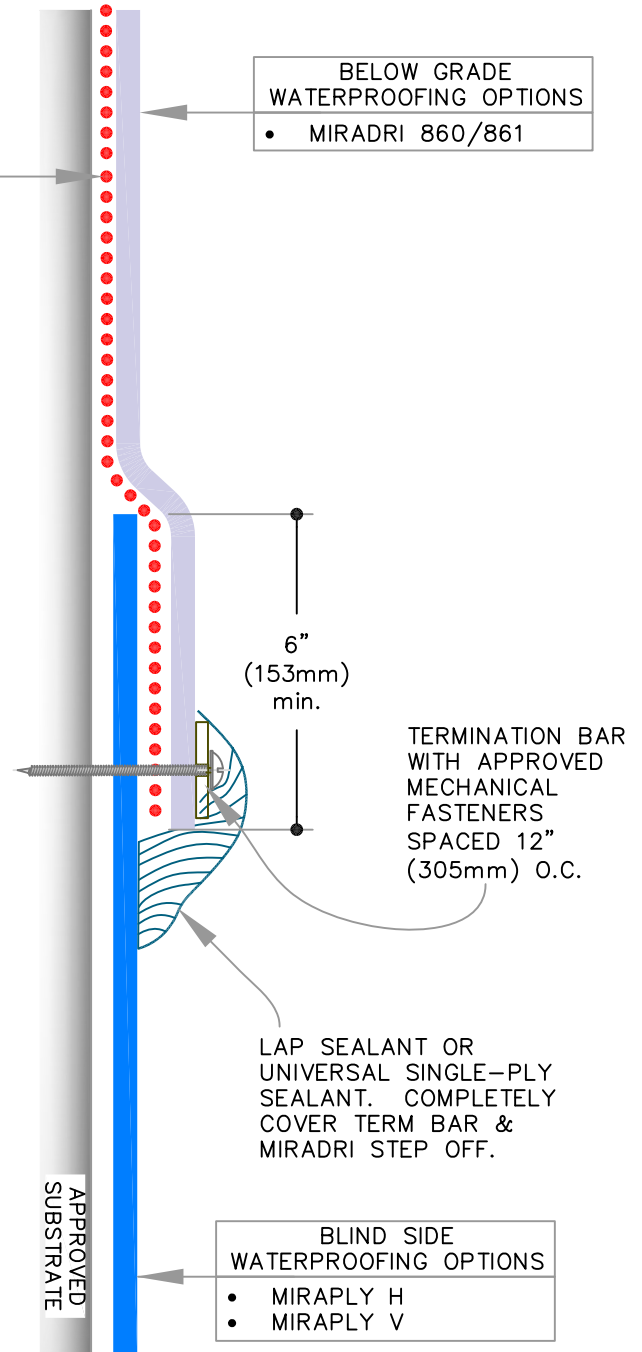


CCW CONTACT ADHESIVE OPTIONS	
• 702	• 715
• 702 WB	• CAV-GRIP
• 702 LV	• AWP


BELOW GRADE WATERPROOFING OPTIONS
• MIRADRI 860/861

INSTALLATION STEPS:

1. INSTALL MIRADRI 860/861 ON THE FOUNDATION WALL, EXTENDING IT OVER PRIMED MIRAPLY A MINIMUM OF 6" (153mm). REMOVE RELEASE LINER AND PRESS INTO PLACE USING HAND PRESSURE. ROLL OVERLAP USING A 2" HAND ROLLER TO ENSURE FULL ADHESION.
2. FASTEN TERMINATION BAR OVER CCW MIRADRI 860/861 USING APPROVED FASTENERS SPACED 12" (305mm) ON CENTER. MIRADRI SHALL EXTEND COMPLETELY BELOW THE TERMINATION BAR TO ENSURE A TOTAL COMPRESSION SEAL BETWEEN IT AND THE MIRAPLY MEMBRANE
3. APPLY LAP SEALANT OR UNIVERSAL SINGLE-PLY SEALANT TO COMPLETELY COVER TERMINATION BAR AND FASTENERS, AND TOOLED TO CREATE A SMOOTH TRANSITION AT MIRADRI STEP-OFF.



THIS DETAIL DEPICTS PRODUCTS COMPATIBILITY ONLY. FOR COMPLETE ROOF-TO-WALL TIE-IN, PLEASE SEE [SECTION 6.](#)

	<div style="border: 1px solid black; padding: 2px; display: inline-block;">0</div> REFER TO NOTES	BELOW GRADE BARRIERS:	BLIND SIDE BARRIERS:	3.1
		MIRADRI 860/861	MIRAPLY H OR V	
REFER TO SPECS FOR ADDITIONAL INFORMATION				