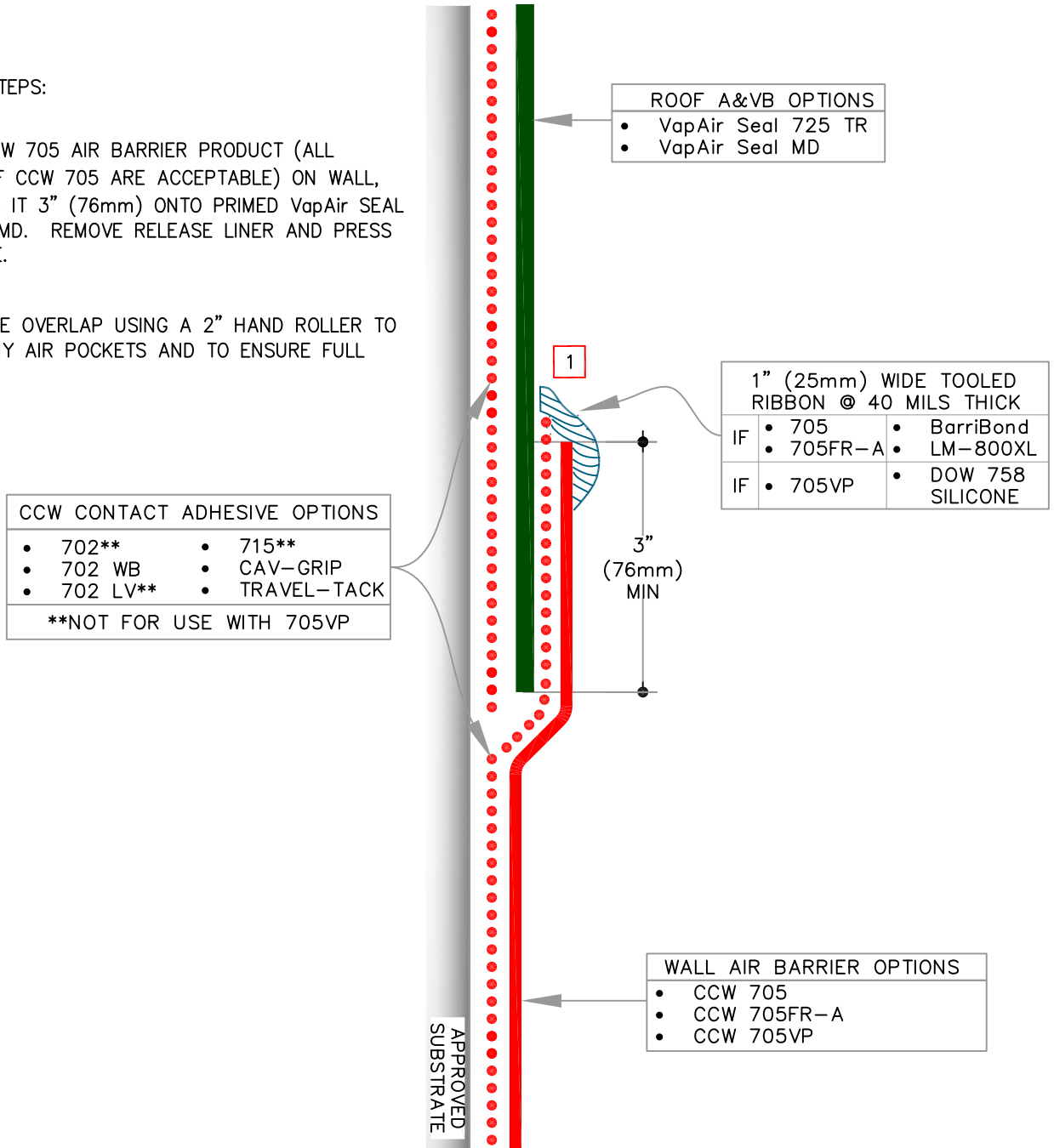


INSTALLATION STEPS:


- 1: INSTALL CCW 705 AIR BARRIER PRODUCT (ALL OPTIONS OF CCW 705 ARE ACCEPTABLE) ON WALL, CONTINUING IT 3" (76mm) ONTO PRIMED VapAir SEAL 725TR OR MD. REMOVE RELEASE LINER AND PRESS INTO PLACE.
- 2: ROLL ENTIRE OVERLAP USING A 2" HAND ROLLER TO REMOVE ANY AIR POCKETS AND TO ENSURE FULL ADHESION.



NOTES:

- 1** IF TIE-IN OCCURS ON A VERTICAL SURFACE, APPLY A CONTINUOUS BEAD OF SEALANT (SEE CHART ABOVE FOR OPTIONS) TOOLED TO 1" (25mm) WIDE BY 40 MILS THICK AT CCW 705 STEP-OFF TO PREVENT THE BUCKING OF WATER

THIS DETAIL DEPICTS PRODUCTS COMPATIBILITY ONLY. FOR COMPLETE ROOF-TO-WALL TIE-IN, PLEASE SEE [SECTION 4](#).

	<p>0</p> <p>REFER TO NOTES</p>	<p>ROOF BARRIERS:</p>	<p>WALL BARRIERS:</p>	<p>1.8</p>
		<p>VapAir SEAL 725TR OR MD</p>	<p>705, 705FR-A OR 705VP</p>	
<p>REFER TO SPECS FOR ADDITIONAL INFORMATION</p>				