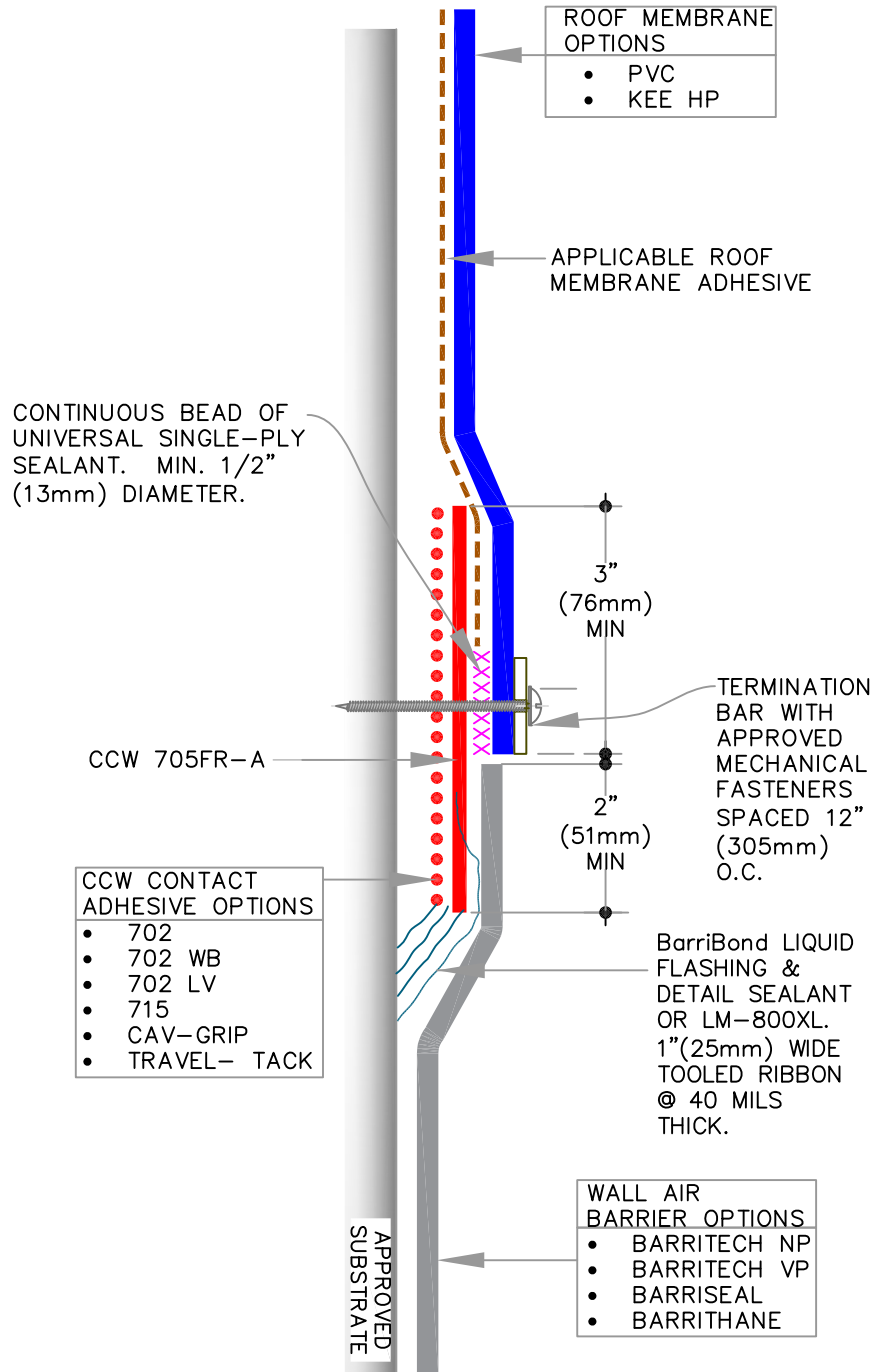



INSTALLATION STEPS:

- 1: INSTALL A MINIMUM OF 6" (153mm) WIDE STRIP OF CCW 705FR-A OVER PRIMED SUBSTRATE, CENTERED DIRECTLY BELOW THE PLANNED TIE-IN LOCATION. REMOVE RELEASE LINER AND PRESS INTO PLACE. ROLL TRANSITION MEMBRANE WITH 2" HAND ROLLER.
- 2: APPLY A CONTINUOUS BEAD OF CCW BARRIBOND OR LM-800XL DETAIL SEALANT AT TRANSITION MEMBRANE STEP-OFF WHERE BARRITECH OR BARRISEAL WILL BE INSTALLED. BEAD SHALL BE TOOLED TO A MINIMUM OF 1" (26mm) WIDE BY 40 MILS THICK AND ALLOWED TO DRY ACCORDING TO INSTALLATION INSTRUCTIONS.
- 3: APPLY CCW BARRITECH, BARRISEAL OR BARRITHANE ON THE WALL, CONTINUING IT 2" (51mm) ONTO CCW 705 FR-A TRANSITION MEMBRANE.
- 4: APPLY APPROPRIATE ROOF MEMBRANE BONDING ADHESIVE OVER SUBSTRATE, CONTINUING 2" (51mm) ONTO THE CCW 705FR-A. ALLOW ADHESIVE TO FLASH OFF ACCORDING TO SPECIFIC ADHESIVE INSTALLATION INSTRUCTIONS.
- 5: INSTALL PVC/KEE HP ROOF MEMBRANE EXTENDING IT 3" (76mm) ONTO TRANSITION MEMBRANE BUTTING IT TO PREVIOUSLY INSTALLED CCW AIR BARRIER. CUT ROOF MEMBRANE AS STRAIGHT AS POSSIBLE TO HELP WITH ALIGNMENT OF TERMINATION BAR. ROLL OVERLAP WITH 2" HAND ROLLER TO ENSURE FULL ADHESION. ENSURE THE LAST 1" (26mm) OF THE ROOF MEMBRANE IS NOT ADHERED TO ALLOW APPLICATION OF UNIVERSAL SINGLE-PLY SEALANT HIGHLIGHTED IN STEP 6.
- 6: APPLY A CONTINUOUS BEAD OF UNIVERSAL SINGLE-PLY SEALANT A MINIMUM OF 1/2" (13MM) IN DIAMETER BETWEEN THE FACE OF THE CCW 705FR-A TRANSITION MEMBRANE AND UNDERSIDE OF THE PVC/KEE HP MEMBRANE. SEALANT SHALL BE APPLIED DIRECTLY IN LINE WITH PLANNED TERMINATION BAR LOCATION.
- 7: WHILE SEALANT IS STILL WET, INSTALL TERMINATION BAR OVER SINGLE-PLY MEMBRANE, SANDWICHING THE SEALANT BETWEEN ROOF MEMBRANE AND THE CCW 705FR-A. TERMINATION BAR SHALL BE FASTENED WITH APPROVED FASTENERS AT A MINIMUM OF 12" (305mm) ON CENTER. FASTENERS SHALL PENETRATE THROUGH THE SEALANT TO ENSURE A WATER AND AIR TIGHT SEAL.



THIS DETAIL DEPICTS PRODUCTS COMPATIBILITY ONLY. FOR COMPLETE ROOF-TO-WALL TIE-IN, PLEASE SEE [SECTION 4](#).

	<div style="border: 1px solid black; padding: 2px; display: inline-block;">0</div> REFER TO NOTES	ROOF BARRIERS:	WALL BARRIERS:	1.6
		PVC OR KEE HP	BARRITECH, BARRISEAL OR BARRITHANE	
REFER TO SPECS FOR ADDITIONAL INFORMATION				